



MODULAR 4-WAY ELECTRONICALLY PILOTED VALVES

R-481-□



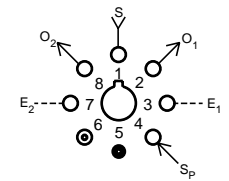
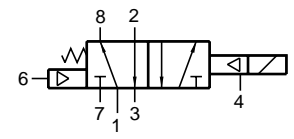
Electronic Valve

Features:

- Extremely low power consumption
- Micro gap construction - snap action and no blow by
- Standard octoport plug-in design
- Provides interface between electronic and pneumatics

Performance:

Working range (psig).....0 to 150
 Flow (SCFM @ 100 psig).....9
 Pilot pressure (psig)40 to 105
 (on port 4)
 Temperature.....32° to 180° F
 Power consumption.....0.65 watt at
 rated voltage



Voltage.....	R-481-6	6 VDC
	R-481-12	12 VDC
	R-481-24	24 VDC

Duty.....Continuous duty at 150% of rated voltage

Description:

R-481 is a fully ported (5-ported), 4-way valve. It is essentially a hybrid valve consisting of the R-401 valve and the Clippard model ET-3 electronic/pneumatic valve. The ET-3 responds to low current, low voltage signals and pneumatically actuates the R-401 4-way valve to which it is attached. A 40 psig pilot pressure must be present at port 4.

R-482-□



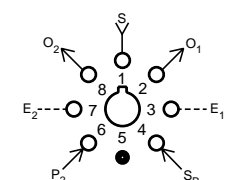
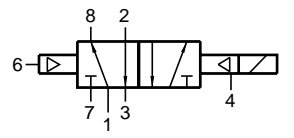
Electronic Valve

Features:

- Extremely low power consumption
- Micro gap construction - snap action and no blow by
- Standard octoport plug-in design
- Provides interface between electronic and pneumatics

Performance:

Working range (psig).....0 to 150
 Flow (SCFM @ 100 psig).....9
 Pilot pressure (psig)20 to 105
 At port 6 (min).....20
 Temperature.....32° to 180° F
 Power consumption.....0.65 watt at
 rated voltage



Voltage.....	R-482-6	6VDC
	R-482-12	12VDC
	R-482-24	24VDC

Duty.....Continuous duty at 150% of rated voltage (50% overload) permissible

Description:

R-482 is a fully ported (5-ported), 4-way valve. It is essentially a hybrid valve consisting of the R-402 valve and the Clippard model ET-3 electronic/pneumatic valve. The ET-3 responds to low current, low voltage signals and pneumatically actuates the R-402 4-way valve to which it is attached. A 20 psig pilot pressure must be present at port 4.